

Throttle valve NW 10 to 100

for water and oil max. 320 bar
for block mounting

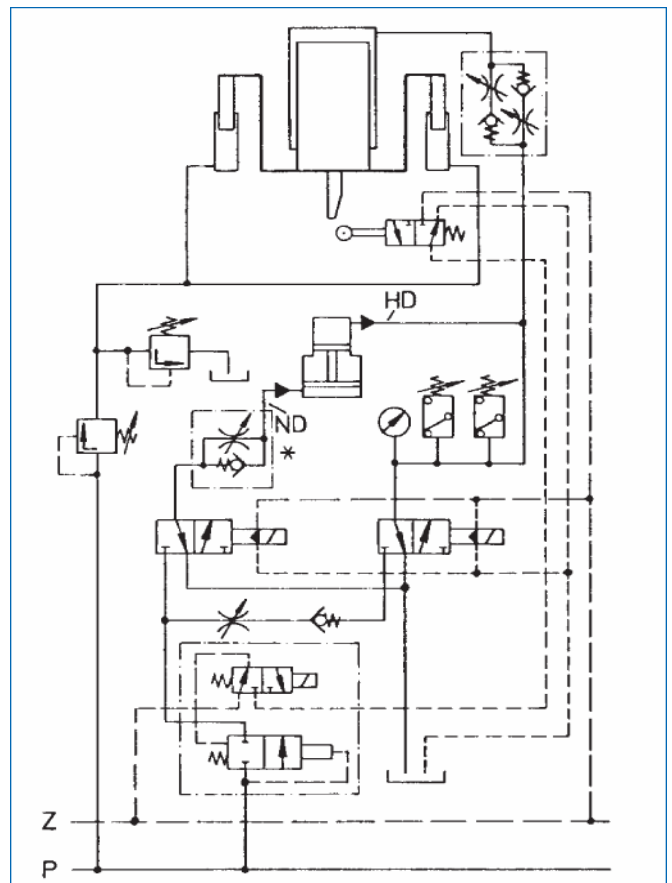
Description

Throttle valves in the series DEC 10-100 consist of a throttle with throttle pinion. They were specially developed for water hydraulics. The throttle valves can continuously regulate fluid flow from B to A or even from A to B. The flow rate depends on differential pressure and viscosity. The design of this throttle also permits a blocking in both flow directions. The throttle is sealed by pressing two metal cones against one another. The max. working pressure should not exceed 320 bar.

Special features

The adjustable throttle can be adjusted under pressure, and is secured against auto-turning by means of a locknut. Throttle and throttle seat are easy to replace. Throttle valves of this type are almost insensitive with regard to the high flow speeds occurring in hydraulic press water systems. All wear parts are made of corrosion resistant materials, are easy to access and fast to replace. The mounting position can be freely chosen.

Mounting example



* Throttle check valve