

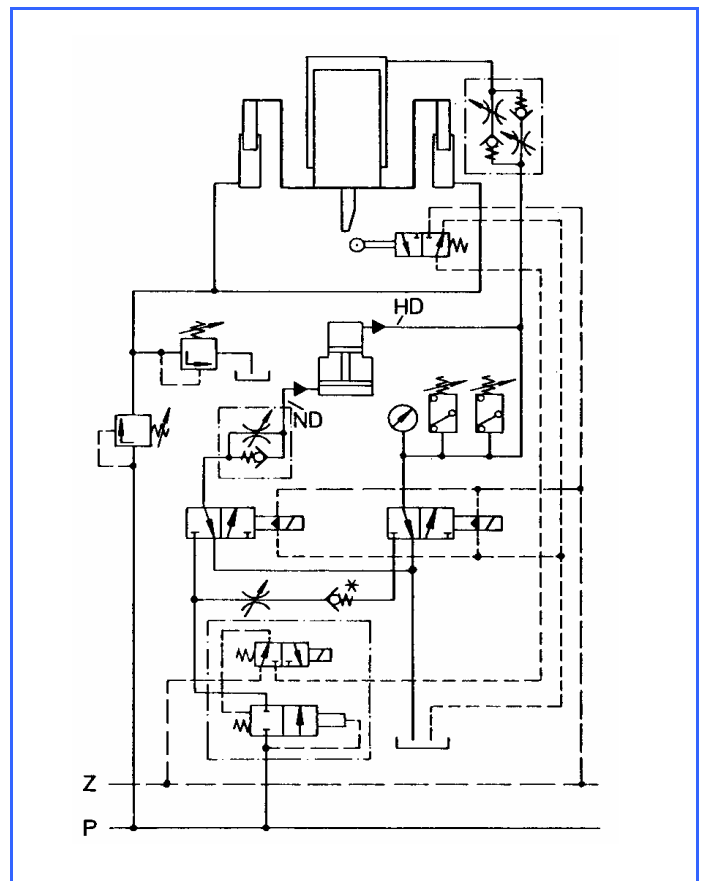
Check valve NW 10 to NW 80

for water and oil
max 320 bar for flange connection

Series RV 10-80 check valves are cone seat valves. Sealing is effected by pressing two metal cones against one another. They were specially developed for water hydraulics. In accordance with the symbol attached to the housing, these check valves have a free passage from A to B and seal off in the opposite direction without any leakage water. The opening stroke of the valve cone is provided with an end position damping and dimensioned such that when the return flow starts a fast closure is assured.

The opening pressure is 1 bar. The max. working pressure should not exceed 320 bar. However, the check valves are also available for other opening pressures as well as without closing spring. State the required opening pressure when ordering. Check valves without spring - flow direction A to B fitted into the line in a direction pointing vertically upwards - may also be used as intake valves, for example.

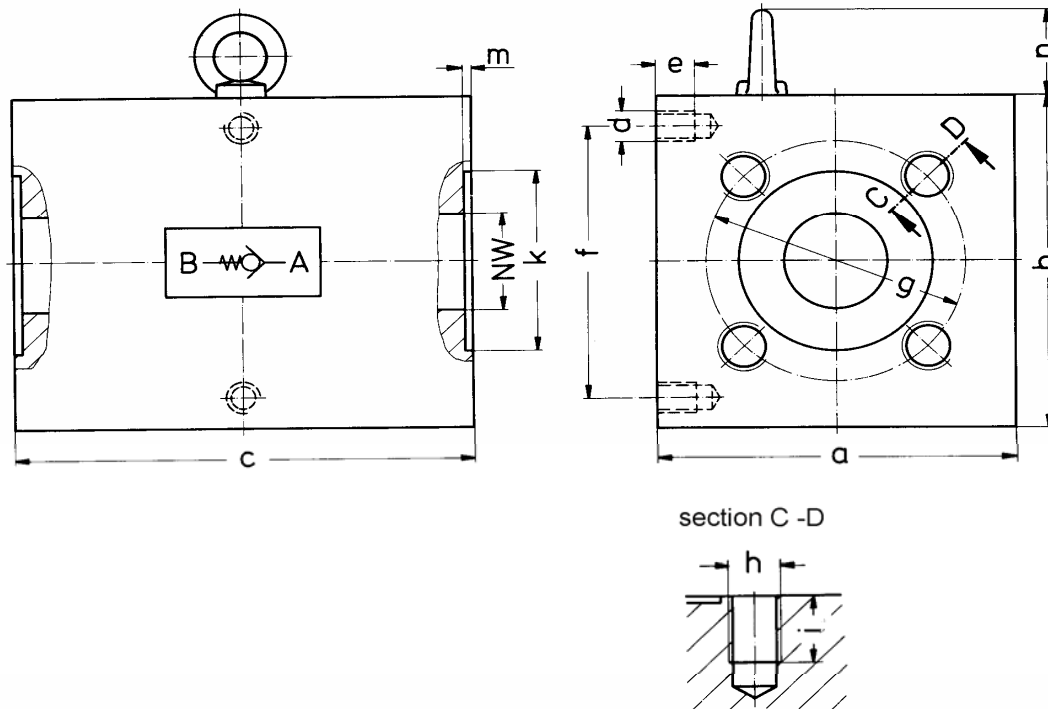
Mounting example



Special features

The valve cone as well as the closing spring are fitted in an extremely flow-promoting fitted cartridge. A double guide for the valve cone provides for a perfect seal on the valve seat. The closing spring is chambered such that medium cannot flow through the same. Thus, in the event of any spring fracture occurring it is impossible for debris to enter into the circuit. Check valves of this type are almost insensitive with regard to the high flow speeds occurring in hydraulic press water systems.

All wear parts are made of corrosion resistant materials, are easy to access and fast to replace. The mounting position can be freely chosen.



Typ-Best.-Nr.	NW	A	B	a	b	c	d	e	f	g	h	i	k	m	n
10/RV/315	10	FA10	FA10	50	50	80	M 8	10	32	∅ 44	M10	18	∅ 28	2	-
		ATI	ATI												
15/RV/315	15	FA15	FA15	60	60	95	M 8	15	40	∅ 54	M10	18	∅ 38	2	-
		ATI	ATI												
25/RV/315	25	FA25	FA25	80	80	115	M10	15	60	∅ 72	M12	20	∅ 55	2	-
		ATI	ATI												
32/RV/315	32	FA32	FA32	90	90	130	M10	15	70	∅ 80	M16	22	∅ 60	2	-
		ATI	ATI												
40/RV/315	40	FA40	FA40	100	100	140	M10	15	80	∅ 98	M16	22	∅ 76	2	-
		ATI	ATI												
50/RV/315	50	FA50	FA50	120	120	185	M12	20	90	∅ 118	M20	23	∅ 92	2	-
		ATI	ATI												
65/RV/315	65	FA65	FA65	150	150	220	M16	25	110	∅ 145	M24	25	∅ 110	2	44,5
		ATI	ATI												
80/RV/315	80	FA80	FA80	200	200	300	M20	30	150	∅ 175	M30	30	∅ 135	2	53
		ATI	ATI												

larger nominal widths on request